

*Handwritten mark*



# Office of the Governor – Guam Medical Referral Office

P.O. Box 2950 Hagåtña, Guam 96932

Telephone: (671) 475-9350/353/428

Facsimile: (671) 472-7557

**FELIX PEREZ CAMACHO**  
THE HONORABLE GOVERNOR OF GUAM

**MICHEAL W. CRUZ M.D.**  
THE HONORABLE LIEUTENANT GOVERNOR

January 30, 2009

To: Governor of Guam  
Lt. Governor of Guam  
**Speaker's Office**  
Office of the Public Auditor-electronic version through email [ycabrera@guamopa.org](mailto:ycabrera@guamopa.org)  
Senator Frank B. Aguon, Jr.

From: Director, Guam Medical Referral Office

Subject: Monthly Report

Attached is the January 2009 monthly report of activities as required to be submitted at the end of the month.

This report is only for the Philippines, Honolulu, and Los Angeles, California. Any reference to the Guam office is incorporated in the Governor's Office report. Please note that this report includes those already scheduled to depart.

Please note that the outsourcing contract of the Philippines, Honolulu and Los Angeles offices, have officially been signed by the governor on June 24, 2008. Full implementation of outsourcing took effect on July 1, 2008.

Please feel free to contact me should you need any further assistance on this matter by calling our office at 475-9353/9350.

Peter Alecxis Ada

Cc: Chief(s) of Staff: J. George Bamba and Carlotta Leon Guerrero  
BBMR  
BIT  
GMRO Copy

Enclosure

0205

2009 FEB -2 PM 4: 20

*Handwritten mark*

36-09-0197  
Office of the Speaker  
Judith T. Won Pat, Ed. D.  
Date 1/30/09  
Time 5:40  
Received by [Signature]



Office of the Speaker  
**Judith T. Won Pat, Ed. D.**

Date \_\_\_\_\_

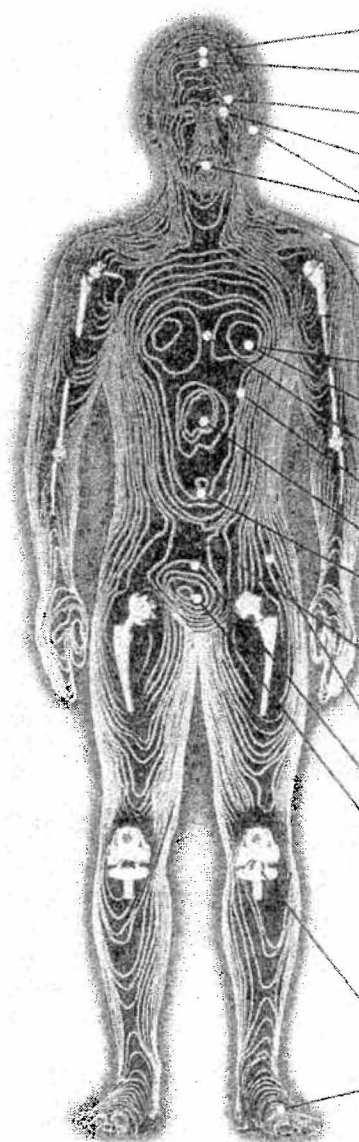
Time \_\_\_\_\_

Received by \_\_\_\_\_

# GUAMI MEDICAL REFERRAL OFFICE MONTHLY REPORT

Facility	No. Processed	MIP/Medicaid	StayWell	TakeCare	Select Care	NetCare	Medicare	Workmens Comp.	VA	Military	Self Pay	Other
<b>PHILIPPINE OUT BOUND</b>												
Asian Hospital	1										1	
St. Luke's	68	5	7	37	7					10	2	
Medical City												
Other	1			1								
<b>TOTAL PATIENT FOR PHILIPPINES</b>	<b>70</b>	<b>5</b>	<b>7</b>	<b>38</b>	<b>7</b>					<b>10</b>	<b>3</b>	
<b>TOTAL ESCORT FOR PHILIPPINES</b>	<b>81</b>											
<b>HAWAII OUT BOUND</b>												
Kapiolani	1		1									
Pali Momi	1						1					
Queen's	1					1						
Shriners	1										1	
Straub Clinic	5			2	1	1					1	
Tripler	7							4			3	
Other	6		1	1			1	1			2	
<b>TOTAL PATIENT FOR HAWAII</b>	<b>22</b>		<b>2</b>	<b>3</b>	<b>1</b>	<b>2</b>	<b>2</b>	<b>5</b>			<b>7</b>	
<b>TOTAL ESCORT FOR HAWAII</b>	<b>20</b>											
<b>LOS ANGELES OUT BOUND</b>												
Anaheim	2			1	1							
Cedar Sinai	1	1										
Children's Hospital: Millers & LA	2	2										
Good Samaritan	8	4	1	3								
Loma Linda												
Long Beach	1			1								
St. Johns												
St. Vincent												
UCLA	2	1	1									
White Memorial												
Other												
<b>TOTAL PATIENT FOR LOS ANGELES</b>	<b>16</b>	<b>6</b>	<b>3</b>	<b>5</b>	<b>2</b>							
<b>TOTAL ESCORT FOR LOS ANGELES</b>	<b>20</b>											
<b>TOTAL PATIENT FOR MONTH</b>	<b>108</b>											
<b>TOTAL ESCORT FOR MONTH</b>	<b>121</b>											
<b>TOTAL EXPIRED FOR MONTH *</b>												
<b>ACCUMULATIVE TO DATE</b>	<b>3027</b>											

# CAUSES FOR REFERRAL



	Philippines	Hawaii	LosAngeles
Mental Health/Psychiatry	2		
Neurology	1		
Ophthalmology		1	1
Optometrist	2	3	1
Otorhinolaryngology			
Orthodontist	3	1	1
Dermatology	2		
Cardiovascular	4	1	1
Surgery - Cardiovascular	1	1	1
Surgery - Vascular			
Pulmonary Disease			
Surgery - Neurology	2		
Gastroenterology (Abdominal)	4	2	1
Spinal Column	6	1	
CANCER	11	5	1
Nephrology	1		
Obstetrics & Gynecology	4		1
Urology	1		1
HIP (dysplasia, surgery)		3	
DIABETIC	2	2	
Surgery - Orthopedics	2	1	1
Podiatry	1		1
Complete Physical Examination:			
Second Opinion:	10		
	4		3
OTHER	7	1	2
<b>TOTAL :</b>	<b>70</b>	<b>22</b>	<b>16</b>
		<b>Grand Total</b>	<b>108</b>
		<b>for the month:</b>	

**January 2009**

**Government of Guam  
Report for the month of January 2009  
Budget Digest**

**GUAM**

<b>A5400 Account code</b>	<b>Appropriation Classification</b>	<b>FY 2009 Expenditures &amp; Encumbrances</b>
	<b>PERSONNEL SERVICES</b>	
111	Regular Salaries/Increments	0
112	Overtime/Special Pay	0
113	Benefits	0
	<b>OPERATIONS</b>	
230	Contractual services:	0
233	Office space rental:	0
240	Supplies & materials:	0
250	Equipment:	0
270	Workers compensation	0
271	Drug testing	0
280	Sub-recipient/sub grant	0
290	Miscellaneous	0
	<b>UTILITIES</b>	
361	Power	0
362	Water/sewer	0
363	Telephone/toll	0
450	<b>CAPITAL OUTLAY</b>	0

Note: The Guam office operation and budget are under the Governor's office budget submission

**Government of Guam**  
**Report for the month of January 2009**  
**Budget Digest**

**PHILIPPINES**

<b>A5400 Account code</b>	<b>Appropriation Classification</b>	<b>FY 2009 Expenditures &amp; Encumbrances</b>
	<b>PERSONNEL SERVICES</b>	
111	Regular Salaries/Increments	0
112	Overtime/Special Pay	0
113	Benefits	0
	<b>OPERATIONS</b>	
230	Contractual services:	\$42,556.80
233	Office space rental:	0
240	Supplies & materials:	0
250	Equipment:	0
270	Workers compensation	0
271	Drug testing	0
280	Sub-recipient/sub grant	0
290	Miscellaneous	0
	<b>UTILITIES</b>	
361	Power	0
362	Water/sewer	0
363	Telephone/toll	0
450	<b>CAPITAL OUTLAY</b>	0
	<b>TOTAL APPROPRIATIONS</b>	<b>\$42,556.80</b>

**Notation**

Amount expended for January only	\$14,185.60
Number of <b>Patients</b> sent to Philippines for <b>January</b>	70
Amount spent per patient in Philippines for <b>January</b>	\$202.66
Number of <b>Escorts</b> sent to Philippines for January	81
Number of patients sent to Philippines for <b>Cumulative 2008</b>	272

**Government of Guam  
Report for the month of January 2009  
Budget Digest**

**HONOLULU**

<b>A5400 Account code</b>	<b>Appropriation Classification</b>	<b>FY 2008 Expenditures &amp; Encumbrances</b>
	<b>PERSONNEL SERVICES</b>	
111	Regular Salaries/Increments	0
112	Overtime/Special Pay	0
113	Benefits	0
	<b>OPERATIONS</b>	
230	Contractual services:	\$56,170.40
233	Office space rental:	0
240	Supplies & materials:	0
250	Equipment:	0
270	Workers compensation	0
271	Drug testing	0
280	Sub-recipient/sub grant	0
290	Miscellaneous	0
	<b>UTILITIES</b>	0
361	Power	0
362	Water/sewer	0
363	Telephone/toll	0
450	<b>CAPITAL OUTLAY</b>	0
	<b>TOTAL APPROPRIATIONS</b>	<b>\$56,170.40</b>

**Notation**

Amount expended for January only	\$18,723.46
Number of <b>Patients</b> sent to Hawaii for <b>January</b>	22
Amount spent per patient in Hawaii for <b>January</b>	\$ 851.06
Number of <b>Escorts</b> sent to Hawaii for January	20
Number of patients sent to Hawaii for <b>Cumulative 2009</b>	86

**Government of Guam  
Report for the month of January 2009  
Budget Digest**

**LOS ANGELES**

<b>A5400 Account code</b>	<b>Appropriation Classification</b>	<b>FY 2009 Expenditures &amp; Encumbrances</b>
	<b>PERSONNEL SERVICES</b>	
111	Regular Salaries/Increments	0
112	Overtime/Special Pay	0
113	Benefits	0
	<b>OPERATIONS</b>	
230	Contractual services:	\$48,707..89
233	Office space rental:	0
240	Supplies & materials:	0
250	Equipment:	0
270	Workers compensation	0
271	Drug testing	0
280	Sub-recipient/sub grant	0
290	Miscellaneous	0
	<b>UTILITIES</b>	
361	Power	0
362	Water/sewer	0
363	Telephone/toll	0
450	<b>CAPITAL OUTLAY</b>	0
	<b>TOTAL APPROPRIATIONS</b>	<b>\$48,707.89</b>

**Notation**

Amount expended for January only	\$16,235.96
Number of <b>Patients</b> sent to Los Angeles for <b>January</b>	16
Amount spent per patient in Los Angeles for <b>January</b>	\$ 1,014.74
Number of <b>Escorts</b> sent to Los Angeles for January	20
Number of patients sent to Los Angeles for <b>Cumulative 2008</b>	56



## ESTIMATED COST PER PATIENT

<b>Site</b>	<b>1stQuarter Expenditure</b>	<b>Number of Patients Served</b>	<b>Total Cost per patient for the quarter</b>
<b>Honolulu</b>	\$18,723.46	22	\$851.06
<b>Los Angeles</b>	\$16,235.74	16	\$1,014.73
<b>Philippines (Outsourced)</b>	\$14,185.60	70	\$202.65

**Note:** *This figure is estimated because BBMR has not yet closed its books for the quarter.*